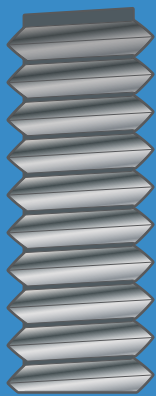


FASTENER SUPERSTORE FASTENER GUIDE

Threads

Machine Screw / Cap Screw Threads are used in numerous types of screws & bolts:

- Machine Screws
- SEMS Screws
- Socket Screws
- Socket Set Screws
- Socket Shoulder Screws
- Precision Shoulder Screws
- Thumb Screws
- Wing Screws
- Types F, 1 & 23 Thread Cutting Screws
- Thread Forming Screws for Metal
- Some Self-Drilling Screws
- Weld Screws
- Serrated Hex Flange Screws
- Hanger Bolts (1 Side Only)
- Threaded Rod
- Most Bolts



Most commonly referred to as machine screw threads, screws of this style are designed to align with a threaded nut or hole with a matching diameter and thread count. They use **Unified Thread Standard (UTS)**, and are generally available in **UNF (Unified National Fine)** and **UNC (Unified National Coarse)** options. Sizes below 1/4" use numbers to describe their diameter, while screws 1/4" & higher use fractions. Their sizes are described first with the diameter, followed by a hyphen, and then with the count of threads per inch. (Examples: 4-40, 12-24, 5/16-18)

Screw Size	UNF	UNC
#0	0-80	
#1	1-72	1-64
#2	2-64	2-56
#3	3-56	3-48
#4	4-48	4-40
#5	5-44	5-40
#6	6-40	6-32
#8	8-36	8-32
#10	10-32	10-24
#12		12-24
1/4"	1/4-28	1/4-20
5/16"	5/16-24	5/16-18
3/8"	3/8-24	3/8-16
7/16"	7/16-20	7/16-14
1/2"	1/2-20	1/2-13
9/16"	9/16-18	9/16-12
5/8"	5/8-18	5/8-11
3/4"	3/4-16	3/4-10
7/8"	7/8-14	7/8-9
1"	1-14	1-8
1 1/8"	1 1/8-12	1 1/8-7
1 1/4"	1 1/4-12	1 1/4-7
1 3/8"	1 3/8-12	1 3/8-6
1 1/2"	1 1/2-12	1 1/2-6
1 3/4"		1 3/4-5
2"		2-4.5
2 1/4"		2 1/4-4.5
2 1/2"		2 1/2-4
2 3/4"		2 3/4-4
3"		3-4
3 1/4"		3 1/4-4
3 1/2"		3 1/2-4
3 3/4"		3 3/4-4
4"		4-4

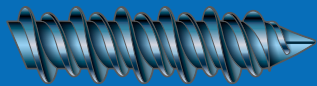
Metric Machine Screws are notated in metric diameter and thread pitch. Pitch is the distance, in millimeters, between threads.

Below are the metric screw and bolt sizes that we carry:

M1.6-0.35	M3.5-0.6	M7-1.0	M12-1.75	M18-2.5
M2-0.4	M4-0.7	M8-1.25	M14-2.0	M20-2.5
M2.5-0.45	M5-0.8	M10-1.5	M16-2.0	M24-3.0
M3-0.5	M6-1.0			

Threads *cont.*

CONCRETE SCREWS



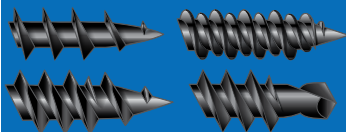
Concrete screws cut their own threads into concrete, brick & other masonry materials. Features high and low double lead threads with notched high threads. Diamond shaped, nail point helps with self starting in hard, dense material.

DECK SCREWS



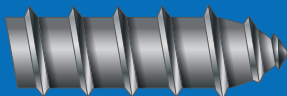
Used in woods with medium density. Dacrotized steel provides corrosion resistance and doesn't discolor wood. Stainless steel options are also offered in a type 17 point which has a chip cavity to assist with driving.

DRYWALL SCREWS



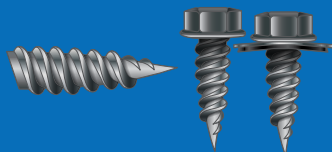
Coarse Drywall Screws feature an extra sharp point, spaced threads & a black phosphate finish. Fine Drywall Screws have double lead threads for easy self starting. We also carry drywall screws in High-Low & Self-Drilling styles.

LAG SCREWS



Featuring a hex head, widely spaced threads & a gimlet point, lag screws are most commonly used in wood or with lag screw shields. Larger diameters generally require pre-drilled pilot holes.

SELF-PIERCING SCREWS/ SPEED POINT



Used in thin metals, often metal roofing for barns & other outbuildings. The sharp tip allows for self starting without drilling pilot holes, while the twin lead threads reduce driving torque.

WOOD SCREWS



Designed with a tapered point, and a sharp crested, coarse pitch thread, they are able to self start in wood materials. Produces a mating thread which assists with pullout strength.

TYPE 17



Thread cutting style offered in combination with some deck & wood screws. Wide, sharp chip cavity helps with clearance of materials. Widely spaced, sharp threads help lower driving torque requirements.



FASTENER BUYING MADE SIMPLE

The Fastener Superstore is your one stop shop for nuts, bolts, washers, rivets, standoffs and more! We have everything you need right here.

- ✓ 34,000+ Distinct Parts
- ✓ All Pricing Online
- ✓ No Registration Required
- ✓ Same Day Shipping on Most Orders
- ✓ Order online, via phone, email or fax
- ✓ Extended Customer Service Hours (7am-7pm CT)
- ✓ Quotes Available for Larger Quantities

**SELF-DRILLING
SCREWS**

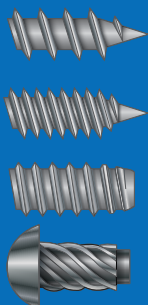


BSD - Standard Self Drilling Screw Style; Spaced threads & a drill bit styled point. Eliminates need for pre-drilling. Used for both wood and metal materials.

CSD - Self Drilling Screw with machine screw threads. Sometimes used for thicker materials, or when the screw needs to be used in conjunction with a nut.

Point Sizes (#2, #3, #4, & #5) - Self Drilling Screws are available with drill tips of varying lengths. A higher number equates to a longer tip. Point sizes are usually tied to diameter sizes, but some diameters will offer point size options. Thickness of the material will effect point length requirements.

**SHEET METAL/
SELF TAPPING SCREWS**



Most screws with pointed tips can fall under the "self tapping" name, but at Fastener SuperStore we categorize self drilling and self tapping as separate styles. The first two of the four styles in our "Self Tapping" section, and are often referred to as sheet metal screws.

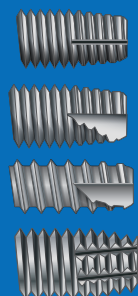
Type A - Widely spaced threads & always fully threaded, these screws have the same thread counts as standard wood screws. The only difference being that wood screws are partially threaded.

Type AB - Features finer threads for better hold in thin sheet metal. Recommended over type A for resin filled plywood and other brittle materials.

Type B - Blunt point requires pre-drilling. For molded or through holes in thin metal, non-ferrous castings, plastics or resin-filled plywood.

U Drive - Rounded head, not containing a drive style, U drive screws are also called hammer drive screws. They are hammered into pre-drilled holes in metals and plastics, creating a permanent fastening.

**THREAD CUTTING
SCREWS**



These styles of screws cut matching threads into the materials into which they are installed. Sharp cutting edges assist with driving, while a variety of chip cavity styles help with clearance of cut materials.

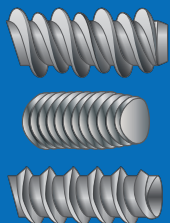
Type 1 - Generally used in softer metals such as steel sheets, alloy steels, cast iron, brass & plastics. Has machine screw threads.

Type 23 - These thread cutting screws feature machine screw threads, a blunt point & a large chip cavity. The cavity allows for clearance of the cut material.

Type 25 - Features wider spaced threads than other thread cutting screws, a blunt point & a large chip cavity. For molded or through holes in plastics and other soft materials.

Type F - Machine screw threads, a blunt point & multiple cutting edges, these screws are used in heavy gauge sheet metal, aluminum, zinc and lead die castings, cast iron, brass and plastics.

**THREAD FORMING/
THREAD ROLLING SCREWS**



Rather than cutting threads into materials, thread forming screws create threads by compacting and creating pressure against the walls of the materials it is installed into.

High - Low - Used in softer materials such as plastic, nylon & wood. Double lead thread design reduces torque requirements, improves pullout strength & lessens the risk of damaging or cracking materials.

Trilobe TFS for Metal - Generic alternatives to TAPTITE® screws, trilobular design allows for lower driving torque, eliminates chips and resists vibrational loosening.

TFS for Plastics - Generic alternatives to PLASTITE® screws, they also feature a trilobular design with widely spaced threads, offers easy starting into predrilled holes. Used in plastics and other soft materials.

TAPTITE® and PLASTITE® are registered trademarks owned by Research Engineering & Manufacturing, Inc. (REMINC). REMINC has not licensed the use of either of these trademarks to Fastener SuperStore.